

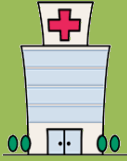
# HAWAII POISON CENTER 2020 ANNUAL REPORT JULY 1, 2020 – JUNE 30, 2021



**6,200 Human Exposures**  
**837 Information Calls**  
**12,904 Inbound Calls/2,132 Outbound Calls**



## 1,557 HEALTHCARE FACILITY CASES



**3,997 POISONING CASES MANAGED  
ONSITE, SAVING TIME AND COST OF  
AN EMERGENCY ROOM VISIT**



**FOR EVERY \$1 SPENT ON  
POISON CENTER SERVICES \$13.59 IS  
SAVED IN MEDICAL EXPENSES  
RESULTING IN \$1,994,903  
SAVINGS TO HAWAII**

## Poisoning is the leading cause of unintentional death due to injury in the US.



**2,688 TOTAL MEDICATION EXPOSURES**

**7,307 TOTAL CASES**

**1,014 ANALGESIC EXPOSURES**

**770 TOTAL EXPOSURE TO CLEANING PRODUCTS & COSMETICS**



## 3,301 EXPOSURES AGE 19 AND UNDER



866-UC-PEHSU or (866) 827-3478 <https://www.pehsu.net/>

### WHO CALLS THE POISON CENTER?

Anyone can experience a poison emergency. The public and healthcare professionals call for help for people of all ages in over 150 languages

### PROFESSIONAL EDUCATION

The Hawaii Poison Center is able to provide on-site appearances for professional / public education. If you are interested in having a presenter at your event please visit our website [www.hipoisoncenter.org](http://www.hipoisoncenter.org) and click on "email".

### PUBLIC EDUCATION

The Hawaii Poison Center ships poison center brochures, stickers, magnets and other educational materials (in English and Spanish) to the HI State Dept. of Health throughout the year. **Become a Poison Prevention Educator! Sign up (for free) here:** <https://training.rmpds.org/>

### 2020 STAFF

RMPDS Director: Richard Dart, MD, PhD  
Medical Director: Christopher Hoyte, MD  
Poison Center Director: Shireen Banerji, PharmD., DABAT  
Public Education Coordinator: Alyssa Guttenberg, RN, CSPI  
Poison Center Coordinator: Amber Lucero  
Poison Center Clerical Support Specialist: Lynn Antony

### CALLS BY COUNTY TO THE HAWAII POISON CENTER

*These mapped calls are for callers who identified a Hawaii zip code as their call location*

