

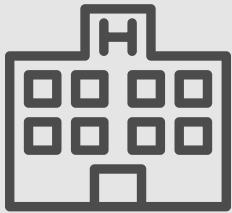
NEVADA POISON CENTER

QUARTERLY REPORT - Q218 OCT - DEC 2018



3,953 Human Exposures

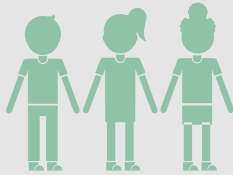
6,947 Calls to the PC



1,103
Healthcare Facility
Cases



Outbound Calls:
2,064



2,182 Exposures Age 19 & Under

County with
the most cases?
Clark County - 2,871

1,958 Total Medication Exposures



4,788 Total Cases

Busiest Day of the Week for Calls?

Monday

8 p.m. to 9 p.m.

Peak Call Volume



817

Analgesic
Exposures

\$1,186,860

Savings to Nevada

Total Exposure to Cleaning
Products & Cosmetic Items



457



Toll Free: (866) 827-3478

<http://wspehsu.ucsf.edu>