

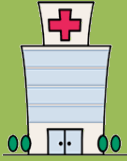
# HAWAII POISON CENTER 2019 ANNUAL REPORT JULY 1, 2019 – JUNE 30, 2020



**6,766 Human Exposures**  
**1,023 Information Calls**  
**12,270 Inbound Calls / 2,368 Outbound Calls**



**1,685 HEALTHCARE FACILITY CASES**



**FOR EVERY \$1 SPENT ON  
POISON CENTER SERVICES \$13.59 IS  
SAVED IN MEDICAL EXPENSES**

**4,289 POISONING CASES MANAGED  
ONSITE, SAVING TIME AND COST OF  
AN EMERGENCY ROOM VISIT**



**\$2,185,559 SAVINGS TO HAWAII**

**Poisoning is the leading cause of unintentional death due to injury in the US.**



**2,974 TOTAL MEDICATION EXPOSURES**

**8,062 TOTAL CASES**

**920 ANALGESIC EXPOSURES**

**817 TOTAL EXPOSURE TO CLEANING PRODUCTS & COSMETICS**

**225 TOTAL EXPOSURES TO MARINE AND PLANTS**



**3,521 EXPOSURES AGE 19 AND UNDER**



**866-UC-PEHSU or (866) 827-3478 <https://www.pehsu.net/>**

## **CALLS BY COUNTY TO THE HAWAII POISON CENTER**

*These mapped calls are for callers who identified a Hawaii zip code as their call location*

### **PROFESSIONAL EDUCATION**

The Hawaii Poison Center is able to provide on-site appearances for professional / public education. If you are interested in having a presenter at your even please visit our website [www.hipoisoncenter.org](http://www.hipoisoncenter.org) and click on "email".

### **WHO CALLS THE POISON CENTER?**

Anyone can experience a poison emergency. The public and healthcare professionals call for help for people of all ages in over 150 languages

### **PUBLIC EDUCATION**

The Hawaii Poison Center ships poison center brochures, stickers, magnets and other educational materials (in English and Spanish) to the HI State Dept. of Health throughout the year.

**Become a Poison Prevention Educator! Sign up (for free) here: <https://training.rmpds.org/>**

### **2019 STAFF**

RMPDS Director: Richard Dart, MD, PhD  
Medical Director: Christopher Hoyte, MD  
Poison Center Director: Shireen Banerji, PharmD., DABAT  
Public Education Coordinator: Alyssa Guttenberg, RN, CSPI  
Poison Center Coordinator: Amber Lucero

