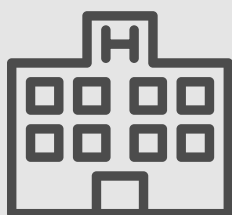


# Nevada Poison Center Quarterly Report: Q418 April - June, 2019



3,971 Human Exposures

7,498 Calls to the PC



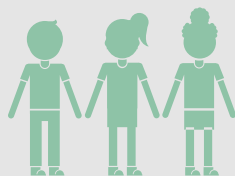
1,131  
Healthcare Facility  
Cases



2,295 Outbound  
Calls

County with the most  
cases?

Clark County: 2,919



2,014 Exposures Age 19 & Under

1,838 Total Medication Exposures



4,721 Total Cases

Busiest Day of the Week for Calls?  
**SUNDAY**

Peak Call Volume: 9-10PM

**\$1,159,409.30**  
Savings to Nevada



717  
Analgesic  
Exposures



450  
Total Exposure to Cleaning  
Products & Cosmetic Items



**PEHSU**  
Pediatric Environmental  
Health Specialty Units

Toll Free: (866) 827-3478  
<http://wspehsu.ucsf.edu/>